

STP GROUP OF COMPANIES

HEAVY ENGINEERING

PRECISION MACHINING

www.stp.az

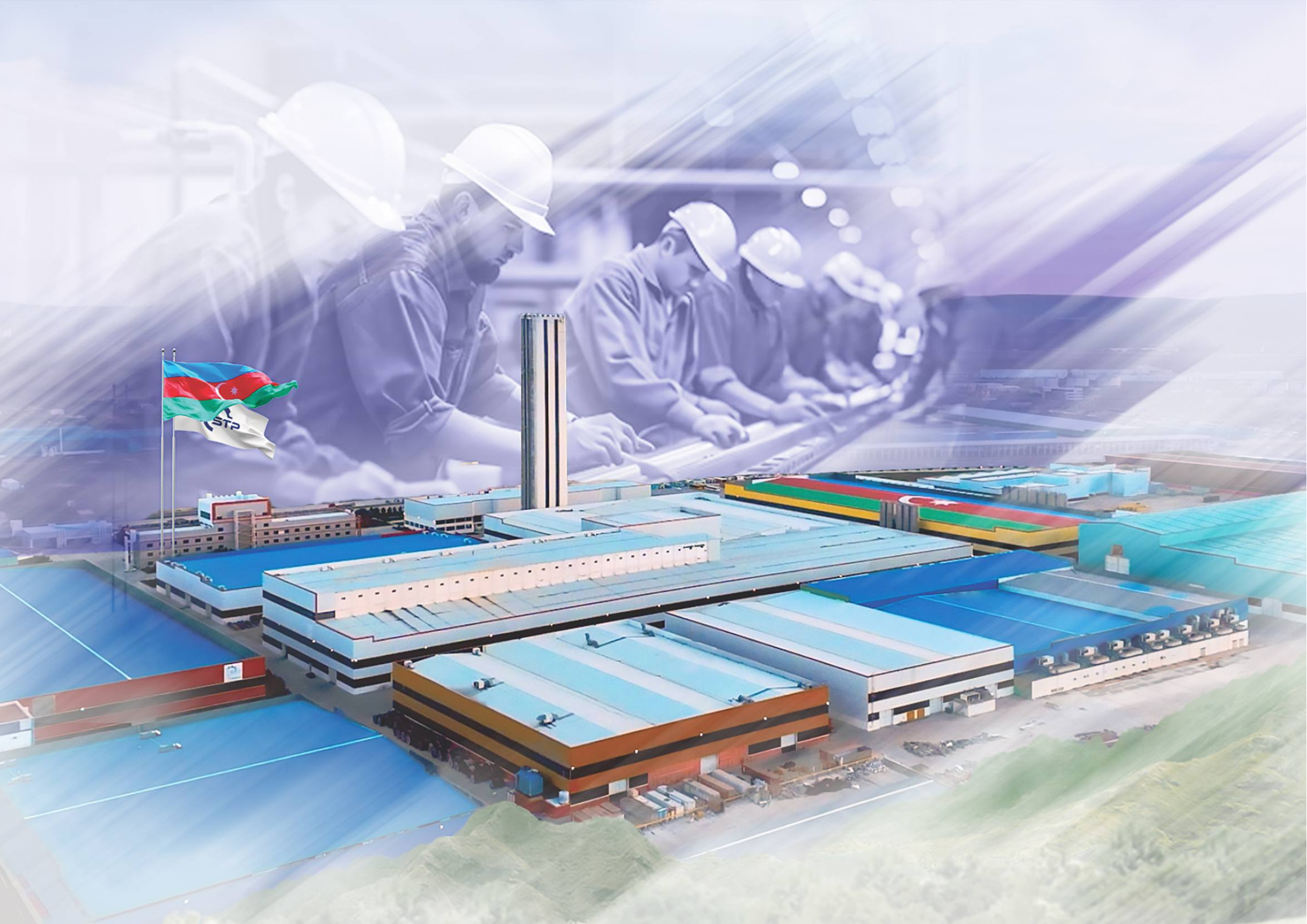


TABLE OF CONTENTS



02

GENERAL INFORMATION



04

OUR STRENGTHS AND ADVANTAGES



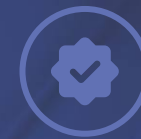
05

PRODUCT AND SERVICE



06

EQUIPMENTS



08

QUALITY CONTROL



10

CONTACT US



STP Heavy Engineering

GENERAL INFORMATION

“STP-Heavy Engineering” LLC is a modern production facility focused on heavy industrial and engineering operations, providing a comprehensive portfolio of products and services.

Brief information about STP Precision Machining Facility:

The Precision Machining Facility has been operating within the STP Group of Companies since 2012 and is a production unit that ensures the manufacture of complex machine and mechanism components entirely based on CNC technologies.

PROCESSING SERVICES

- Milling/Lathes 3–5 axes
- Vertical and horizontal turning
- Transmission machinery
- Erosion machines
- Bending up to 120 mm



PRODUCTION CAPACITY

ALL PRODUCTION AREAS:

10 000 tons/year

GALVANIZING SERVICES:

20 000 tons/year



PRODUCTION AREAS

Mechanical processing

Plasma cutting

Bending

Welding and assembly

Industrial painting and sandblasting

Press shop

Hot-dip galvanizing

Crane manufacturing



SECTORS

Oil and Gas

Agriculture

Construction

Industry



EQUIPMENT

VTL 3000 CNC/VTL 1600 CNC

HMC-1000B CNC/HMC-2000B CNC

TH6920B 240x50 CNC

CKx52100 CNC

JY-BMV180 CNC

DL-105 CNC DI-125 CNC

XK-2640 CNC

"PILLING", "SCHEFFER", "STOECKL - Germany

"KOERNER", "SCHEUCH"- Austria

"C.H.EVENSEN - Norway

etc.



EXPORT

- Russia
- Turkiye
- Hungary
- USA
- France



OUR STRENGTHS AND ADVANTAGES

The equipment produced at the plant consists of the following:

- **3–5 axis CNC** lathes and milling machines, horizontal and vertical machining centers, CNC electrical discharge machining (EDM) machines, grinding machines, gear milling machines, sawing machines, deep hole drilling machine
- Coordinate Measuring Machines (CMM)
- Cutting tools

The plant manufactures a wide variety of technological equipment and fixtures, components and assemblies for all available types of gear transmissions, along with large-dimension shaft-type and prismatic parts.

These include:

- Casting molds and press molds for products made of plastics, rubber, glass, and various non-ferrous metals
- Dies (cutting, bending, forming)
- Housing components (in various dimensions)
- Stepped, splined, and gear shafts (in various dimensions)
- Cylindrical gears, bevel gears, worm gear, Novikov-type gears, hypoid gears etc.
- Tooling components



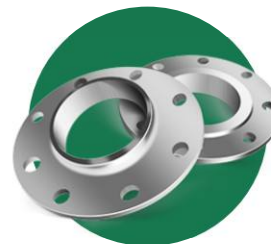
TECHNICAL CAPABILITIES OF PRECISION MACHINING PLANT EQUIPMENT

The mold, press die, and stamping assembly unit is intended for the assembly of different types of molds, press dies, and stamping tools. The deep-hole drilling machine in this facility is capable of machining water channels in molds and press dies with diameters of **Ø10–15 mm** and lengths up to **750 mm**.

Plant units and areas

- Design and engineering and technological unit
- Tooling and design support service
- Mechanical processing areas: milling, turning
- Processing of special-purpose gears
- Electro-erosion processing area
- Assembly area

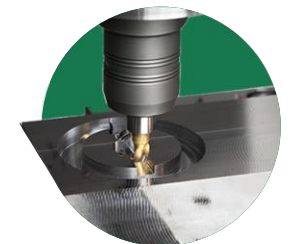
Product and service



Flanges



Gear



Mechanical Processing



UP TO **70%**

of raw material
purchases are
sourced from local
manufacturers.



EQUIPMENT

MAZAK

The lathe section for precision machining of equipment and components is equipped with MAZAK lathes from Japan. These machines allow turning operations on workpieces with **diameters up to 3,500 mm and lengths up to 6,000 mm.**

The dimensions of raw materials that can be machined on **“MAZAK”** lathes, depending on the lathe type, are as follows:

- Ø51mm, L=130mm
- Ø280mm, L=309mm
- Ø420mm, L=1538mm
- Ø580mm, L=1000mm
- Ø920mm, L=6064mm
- Ø340mm, L=385mm
- Ø3500mm, L=1800mm
- Ø320mm, L=530mm
- Ø380mm, L=550mm
- Ø580mm, L=3000mm
- Ø670mm, L=1354mm
- Ø920mm, L=4069mm
- Ø658mm, L=995mm

The milling section for precision machining of equipment and components is primarily equipped with “MAZAK” milling machines from Japan. These machines are capable of performing milling operations on workpieces with dimensions of **3,750 × 10,000 mm, height 1,750 mm,** and weight up to **43 tons.**

The dimensions of raw materials that can be machined on **“MAZAK”** milling machines, depending on the milling machine type, are as follows:

- 3750x10000mm, H=1750mm, 43000kg
- 1740x700mm, H=770mm, 2000kg
- 1300x510mm, H=570mm, 1200kg
- 1380x750mm, H=600mm, 1200kg
- Ø730, H=500mm, 500kg
- Ø3500mm, H=1800, 9500kg(10050kg)
- Ø1450mm, H=1450mm, 2200kg
- Ø1050mm, H=1300mm, 1500kg
- Ø630mm, H=900mm, 400kg



EQUIPMENT

GLEASON

The special-purpose gear processing section is equipped with gear milling and gear hobbing machines from GLEASON, USA. Depending on the type of equipment, it is possible to perform gear processing and hobbing operations on workpieces with diameters up to **Ø1,200 mm**.



MITSUBISHI

In the grinding and erosion processing section, Mitsubishi EDM machines from Japan are installed, including:

- **Wire EDM** (max workpiece **300 × 300 × 250 mm**)
- **Hole Drilling EDM** (max **400 × 250 × 240 mm**)
- **Die-Sinking EDM** (max **400 × 300 × 300 mm**)



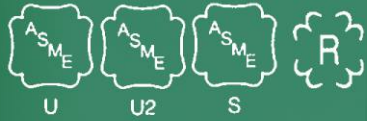
QUALITY CONTROL

The following inspections and tests are conducted in our company's production and service units.

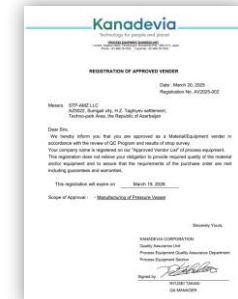
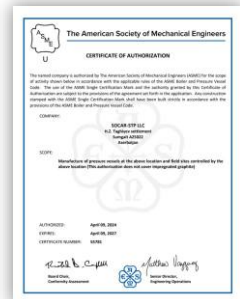
- Visual inspection of weld seams
- Certification tests for welders
- Various tests in painting and coating departments
(Paint application test, Adhesion test, Soluble test, Cross cut test, Dust assessment)
- Geometrical measurements of machined parts and metal structures
(with micron-0.001 mm accuracy)
- Non-destructive testing (MT, PT, UT)
- Hardness test
- Roughness test

At the same time, *our products are supplied with certificates* confirming compliance with relevant standards.






CERTIFICATES

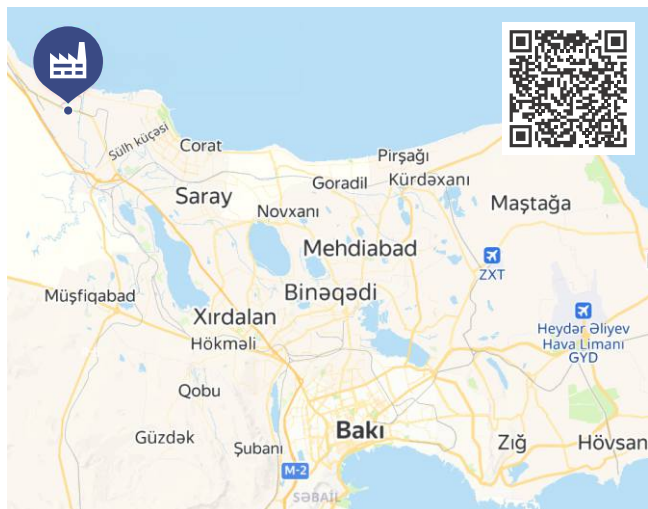


Contact

 H.Z.Taghiyev settlement,
Sumgayit, Azerbaijan AZ5022

 ***0990**

 info@stp.az / sales@stp.az



STP collaborates with companies across various sectors through its industry-compliant production capabilities and quality-driven approach.

Our technologically advanced equipment and adaptable production infrastructure empower us to offer partners high-quality, functional solutions.

Our proven systems and skilled specialists ensure that every partnership is built on a reliable and trustworthy basis.

If stability and functionality are your priorities in manufacturing, partnering with STP may be the right choice.

Equipment

74 milling machines and lathes

18 Gleason machines (France)

Hydraulic press machines
with capacities from
50 to 3,200 tons

